



2021
Annual
Report



CFF

California Farmworker Foundation

Building Better Futures for California Farmworkers

About CFF

OUR STORY

Our story begins in Delano, California in 2016 when a small group of Central Valley Leaders decided to create a non-profit organization that would not only give back to Farmworkers but would also empower Farmworkers to have a say in their communities. CFF was developed to provide concrete solutions for many community-wide issues such as housing crises, food insecurity, and healthcare. Our purpose stands to believe in helping Farmworkers become leaders, empowering individuals to become advocates for themselves and their communities. We take pride in offering all programs and services rendered free of charge to all Farmworkers and farm-working communities. Currently, we continue to invest in Farmworkers via data-driven initiatives, which allows us to develop programs by farmworkers and for farmworkers. Promoting education and wellness continues to be one of our leading efforts in farm-working communities.

MISSION

To serve and support California Farmworkers by providing programs and services to better their quality of life.

GOAL

We believe in helping Farmworkers become leaders, empowering individuals to become advocates for themselves and their communities.

COMPANY CORE VALUES

INTEGRITY. RESPECT. TRUST. SERVICE. COMMUNITY.





TO IMPROVE THE QUALITY OF LIFE OF FARMWORKERS IN CALIFORNIA BY INVESTING IN DATA-DRIVEN INITIATIVES.



CALIFORNIA
FARMWORKER
FOUNDATION

**TABLE OF
CONTENTS**

Board of Directors • P. 4

Executive Message • P. 5

Programs & Services • P. 6-11

Financial Report • P. 12

Our New Frontier • P. 13

Farmworker Needs • P. 14 & 15

Partnerships • P. 16 & 17

WE'RE ON A MISSION

BUILDING BETTER FUTURES

The California Farmworker Foundation, also known as CFF, was formed to offer and create opportunities that would enable Farmworkers that reside in California to develop personal and professional skills. We have five areas in which we model our services: Education, Health & Wellness, Workforce Development, Immigration Services, and Community Engagement.

2021 BOARD OF DIRECTORS



JOE GARCIA
PRESIDENT/FOUNDER



LUIS KATSURAYAMA
CHAIRMAN



PEPE HERNANDEZ
VICE PRESIDENT



ANTONIO PACHECO
TREASURER



IRENE ZUNIGA
SECRETARY



ALBERT DE LEON
BOARD MEMBER



NERIE MATI
BOARD MEMBER



JOE MARTINEZ
BOARD MEMBER



GABRIELLE KIRKLAND
BOARD MEMBER



JOSE ELGORRIAGA
BOARD MEMBER



SARAH WATKINS
BOARD MEMBER

"2021 was without a doubt a challenging year. Looking back at a year where we had to navigate through challenges, uncertainty, and even fear, has clearly shown us the strength that we hold when we come together for our community and for those who serve the essential positions in the workforce, so we can all continue to live our lives as we do today, with food on our tables. It is for this same reason that the CFF board and the entire staff are gratefully committed to the foundation's mission; To help improve the lives of those who help us feed our families." - Luis Katsurayama, Chairman

THE EXECUTIVE DIRECTOR MESSAGE

HERNAN HERNANDEZ

Last year, the California Farmworker Foundation reached more than 300,000 Farmworkers throughout the State of California. In a state with an estimated 800,000 Farmworkers, CFF reached 1 out of 4 Farmworkers. All of this would not have been possible without the generous support of our donors and supporters, who entrusted us with the opportunity to develop critical public health programs during the COVID-19 pandemic. Thanks to the support received by our supporters last year, once again, CFF had a year of growth which translates into the ability to serve more

Farmworkers throughout California. In addition, I would like to recognize and thank our CFF staff, who never left the frontlines during the pandemic. Our staff's efforts were critical in implementing our COVID-19 initiatives throughout the State.

Our COVID-19 Initiatives provided Farmworkers with the opportunity to receive access to valuable resources when they needed them the most. Our ability to create meaningful partnerships with the Agricultural Industry, Healthcare Providers, and Government resulted in CFF leading in farmworker education, testing, and vaccinations. Our philosophy of working together as a Familia saved thousands of Farmworkers' lives during the most critical moments of the pandemic. Our five-year infrastructure investment into our Grower Ambassador Model resulted in CFF leading Farmworker outreach in the Central Valley and Coachella Valley.

As we enter 2022, I would like to remind you that your support is more critical than ever. The COVID-19 pandemic is still present in farm-working communities throughout the state. Farmworkers still need vaccines, testing, support services, and education to combat the pandemic. Although we expect to continue our work of COVID-19 for the first half of the year, we will transition into our five pillars: Community Engagement, Education, Health & Wellness, Immigration Services, and Workforce Development. Our work during the COVID-19 pandemic proved to be successful, and now we will be applying the same strategies to our five pillars to work on the most pressing issues affecting Farmworkers today. Our work is not done yet, but together we can make the world a better place for Farmworkers and their families.



303,797

California Farmworkers Reached in 2021.

Our number one priority at California Farmworker Foundation is Building Better Futures for our farmworker communities, through truly listening to their needs. We do this through our questionnaire and assessment that helps us use the analytics and data to create strategies and programs for our farmworkers.

Five Pillars of Service

Education

English as a Second Language, Financial Literacy, Women Empowerment, Technology Classes, Parenting Classes, Scholarships, and Personal Development

Health & Wellness

Health Education, Food Distribution, Health Services, Health Fairs, Diabetes Prevention, Mental Health, and Physical Activity

Workforce Development

Career Pathways, Internships, Leadership Development, Job Training, and Professional Development

Immigration Services

Citizenship, DACA, Human Rights, Immigration Clinics, Know Your Rights, and Legal Consultations

Community Engagement

Farmworker Leadership Development, Policy Advocacy, Voter Registration, Voter Education, and Community Advocacy





COMMUNITY OUTREACH

105,511

More than **105,511 Farmworkers** have received COVID-19 health education via our outreach efforts. CFF's outreach campaign was developed to bring much-needed awareness and education about the health risks of COVID-19.



COVID-19 RENT RELIEF

179 FAMILIES

Over 95% of all aid distributed via our Farmworker Relief Fund has been for rent relief, as Farmworkers are one step away from being homeless during this pandemic. Data has shown that Farmworkers view rent relief as their most pressing need during this pandemic.





FOOD INSECURITY

45,034 FAMILIES

Increased our food distributions throughout California to combat food insecurity during the COVID-19 pandemic. As a result, CFF delivered more than **300,000 pounds of food** to over **45,034 families** throughout the year.

PPE DISTRIBUTION

113,365 UNITS

More than **113,365 Personal Protective Equipment (PPE)** units have been distributed to Farmworkers and their families via donations from the public and private sectors.

"We work every day to design and implement programs, models, and tools that help close the health gap and thus benefit the populations that need it the most"



COVID-19 TESTING

15,293

The State of California selected CFF as the first Community-Based Organization (CBO) to pilot a new COVID-19 testing program for Farmworkers. The pilot program allowed CFF to test Farmworkers for COVID-19 internally, without the need of a third-party healthcare provider. Upon being approved, CFF built the capacity to test up to **1,000 Farmworkers per day** at their worksite and community settings.



COVID-19 VACCINATION

35,729

As Latino communities continue to be the most affected population in the State, access to the vaccine will be critical to ensuring Farmworker safety and well-being. COVID-19 Testing - Infection rates in rural Farmworker communities continue to increase, and the need for testing is needed to halt the current community spread.

FARMWORKER HOTLINE

12,189

Established a Farmworker hotline to service five Central Valley counties for the Healthy Harvest Program. The call center has received more than **12,189 calls** from Farmworkers seeking support services during the COVID-19 pandemic.



IMMIGRATION SERVICES

408

More than 400 farmworkers received support and assistance from the free resources we offer. We work in alliances with social and academic organizations, as well as the Mexican Consulate to offer free services on issues of interest to migrant Farmworkers.



BUILDING CAPACITY

MORE THAN 30

Expanded our capacity to serve more Farmworkers in California by hiring more than **30 full-time staff members** to support our operations in the Central Valley, Coachella Valley, and Santa Barbara County.





Over \$43,000

**Awarded in Scholarships
to Children of Farmworkers!**

NEW GENERATION PROGRAM

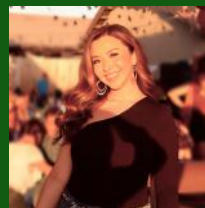
In November, CFF awarded more than **\$43,000** in scholarships to **38** deserving students that reside in California. The majority of the scholarship recipients were first-generation college students and children of immigrant parents who are seeking to pursue a better quality of life and a brighter future.

TOP FIVE SCHOLARSHIP RECIPIENTS



**MARIELA
VEGA**

Lamont, CA
California State University, Bakersfield
Pursuing a master's in Counseling



**ELIZABETH
LAMAS**

Delano, CA
University of California, Bakersfield
Liberal Studies

**SELIM
ZOO ROB**

Riverside, CA
University of California, Riverside
Biophysics Specialization



**ALEJANDRO
PALOMARES**

Thermal, CA
University of Redlands
Biology and Spanish



**MARIA
PALOMARES**

Thermal, CA
University of California, Bakersfield
Pursuing a Master's in Social Work



"Receiving a scholarship from CFF reminds of the effort my parents put to push my dreams into becoming something real. The scholarship is an accomplishment, and a blessing that brings hope. It reminded me of why I am here, por ellos y para ellos. For them, and because of them."

- Alejandro Palomares

END OF THE YEAR REPORT

2021 FINANCIAL REPORT

THIS COULD NOT HAVE BEEN MADE POSSIBLE WITHOUT YOUR CONTINUED SUPPORT.

REVENUE

Grants Funding	\$1,401,672
Private Funding	\$684,805
Total	\$2,086,477

EXPENSES

Programs & Services	85%
Administration	15%

Private Funding
32.8%



Grant Funding
67.2%

Our New Frontier

GROWING BY ONE COUNTY!

The California Farmworker Foundation welcomes its sixth county of California, Santa Barbara, and is proud to serve the farm-working community of Santa Maria Valley. Santa Barbara County is a leading producer of strawberries, wine grapes, broccoli, head lettuce, avocados, and a wide variety of other leafy vegetables. We at CFF, look forward to serving Santa Maria farmworkers, supporting the community, and helping to build better futures!

SIX COUNTIES
OF SERVICE

NOW PROUDLY SERVING
FARMWORKERS

of

SANTA MARIA VALLEY

Madera County

Tulare County

Fresno County

Santa Barbara
County

Kern
County

Riverside
County

2022 FARMWORKER NEEDS

Leading the way to building stronger communities.



PPE DISTRIBUTION

There is still a shortage of Personal Protection Equipment (PPE) nationwide, especially in the Agricultural sector. We have to make sure Farmworkers have access to much-needed PPE during this pandemic and at the worksite, especially when administering pesticides.

DATA COLLECTION

Every month, it is critical for our organization to know Farmworkers' pressing needs. The only way to know this is by hearing from Farmworkers firsthand to bring about much-needed support services.



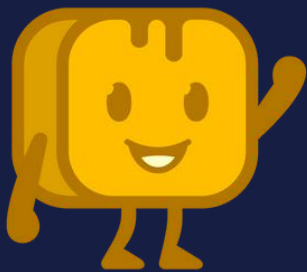
EDUCATION

Today, more than ever, Farmworkers need educational opportunities to improve their quality of life. Direct information is needed to guide Farmworkers through the educational system in their communities. Next year, we plan to invest in education initiatives that will provide Farmworkers with the opportunity for personal and professional growth.



HOW CAN YOU HELP?

HELP US TURN OUR 2022 VISION INTO REALITY.
HERE ARE WAYS YOU CAN LEND A HAND:



Givebuttr



DONATE

MAKE A FINANCIAL CONTRIBUTION EITHER ONE-TIME OR RECURRING AT CALIFORNIAFARMWORKERS.ORG

SPONSOR

SPONSOR A FARMWORKER EVENT BY EMAILING US AT INFO@CALIFORNIAFARMWORKERS.ORG

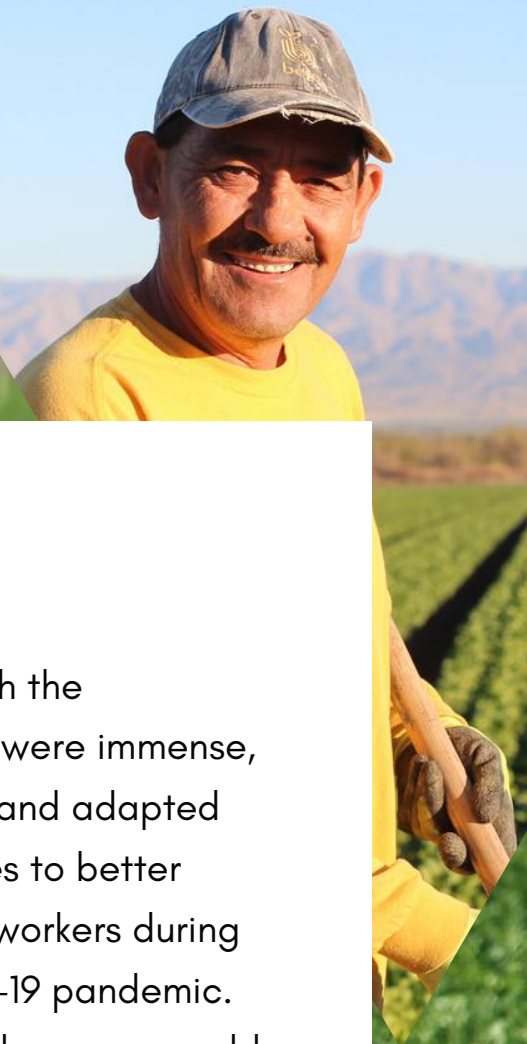
VOLUNTEER

VOLUNTEER AT ONE OF YOUR COMMUNITY OUTREACH EVENTS BY CALLING 559-710-2000

Learn more at

www.californiafarmworkers.org

A MESSAGE TO OUR DONORS & VOLUNTEERS



Thank You!

As we take the time to recap our accomplishments and impact in 2021, we would like to reflect on the past year's challenges and successes. Last year, we dealt with a devastating pandemic that disproportionately affected Farm-working communities. In these trying times, we were able to come together with the Agricultural Community to ensure Farmworker's and their families health and wellness.

Even though the challenges were immense, we shifted and adapted our priorities to better serve Farmworkers during the COVID-19 pandemic. As 2022 is here, we would like to take some time to thank all of our donors and volunteers, who continue to work with us in the frontlines to ensure the well-being of Farmworkers. Once again, thank you for your continued support.



Thank You!

DONOR SPOTLIGHT



UCDAVIS
Western Center
for Agricultural Health
and Safety



Central Valley
COMMUNITY FOUNDATION
Effective Philanthropy. Stronger Communities.



California Department of
PublicHealth



Kern FamilyTM
Health Care



NCFH
National Center for Farmworker Health, Inc.

T MobileTM



TOGETHER
TOWARD HEALTH



CFF

California Farmworker Foundation

THANK YOU!



1120 KENSINGTON STREET

DELANO, CA 93215

PHONE: (661) 778-0015

HOTLINE: (559) 710-2000

INFO@CALIFORNIAFARMWORKERS.ORG

 California Farmworker Foundation  cafarmworker_foundation

WWW.CALIFORNIAFARMWORKERS.ORG